

MTL-NMS 2000

# NETWORK MANAGEMENT SYSTEM

MTL-NMS 2000



Based on the key elements of information and control, MicroTech has developed a powerful, flexible and reliable Network Management System NMS-2000 for tariff/card management and phone operations. NMS-2000 provides complete payphone management functions, from installation and maintenance to call logging and reporting facility. It ensures secure communication between network operators and site owners.

It is a PC based system connected with payphone network through a specially designed modem MTL-Data Port 2002.

## FEATURES

- Payphone supervision
- Communication interface with payphone
- Fault monitoring and reporting
- Configuration management
- User friendly
- Graphical User Interface (GUI)
- Scalable to multi-user system
- 480 payphones per serial port
- Remote maintenance and up gradation
- Remote control support
- Comprehensive network security
- Multilevel password authentication
- 100 % Card usage data base
- Detailed Counters
- Comprehensive Alarms
- Maximum Reports
- Comprehensive history of payphone calls to NMS
- Complete backup and restore facility
- Hot keys

telecommunication

**Features (Contd.....)**

- In coming calls
- Soft card option with rate, expiry date with sales person name
- Set monitoring on daily and weekly basis
- SIM serial and Pin code in GSM (Calling card option)
- GSM network check battery
- 100 % comprehensive CDR (Calls Data Records) including

following details

- Dialed numbers
- Price in local currency
- Time elapsed during call
- Units consumed during call
- Remaining units in card
- Card serial number and face value
- Starting time of call
- Day/Date of call
- Call termination information
- Call category
- Call start source
- Tariff status
- Search and sort facilities
- Interlocking of payphone with allotted line using comprehensive CLI function
- Monitoring and interlocking with LPU presence
- Easy, comprehensive and user friendly tariff generator
- White and Black listing of smart cards up to payphone level
- Soft card assignment
- Interlocking with number of calls done
- Interlocking with number of units consumed
- Comprehensive service enable and disable options
- Hide time and price options per payphone level
- Fax / Extension service control per payphone level
- Comprehensive service option (Local, NWD & Int.)

**Software Platform**

- Windows 2000 Advanced Server
- MS SQL Server 2000

**Software Development Tools**

- Borland C++ builder

**System Capacity**

- Supports 7680 Payphones using 16 telephone lines



**Operating Range**

- Temperature Range 20 °C to 30 °C
- Humidity Range 30 % to 60 %

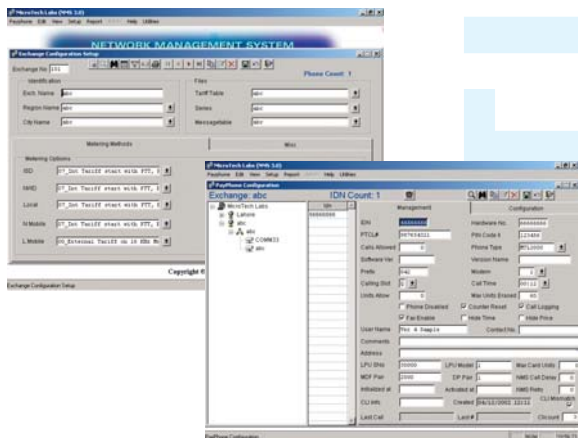
**MTL 2002 Data Port Specifications**

- V.23 Modulation Standard
- RS-232 interface with PC using DB9 connector
- Built in Caller Line Identification system (FSK)
- RJ11 Connector for Line
- RJ11 Connector for Phone
- 12V DC adapter jack
- Power On/Off switch
- Built in Speaker for aural monitor of call status
- LED for displaying status for following signals:
  - Power presence
  - DTR (Data Terminal Ready)
  - DSR (Data Set Ready)
  - RTS (Request To Send)
  - CTS (Clear To Send)
  - RI (Ring Indicator)
  - CD (Carrier Detect)
  - SD (Send Data)
  - RD (Receive Data)
  - HS (Hook Status)

- Dimension 250 X 180 X 53 mm

**Hardware**

- CPU Intel P-4 3.2 GHz or higher
- Intel motherboard 915 or higher
- Kingston RD RAM 512 MB or higher
- Floppy Drive 1.44 MB
- Hard Drive 80 GB or Higher (7200 RPM)
- VGA card 32 MB or higher
- 56k internal Modem (Apache or US Robotics) Hard
- Moxa/ Multi I/O card
- CD or DVD writer
- CD or DVD drive
- Printer port LPT1
- PS/2 Mouse
- PS/2 Keyboard
- SVGA Monitor
- Network Card D-link
- Printer Laser JET
- UPS for long backup time
- MTL 2002 Data Port External



**Head Office**

Simla Tower, 5-Davis Road, Lahore, Paksitan  
 Tel: 92-42-111-111-684 Fax: 92-42-6370749  
 Email: marketing@mtlimited.com URL: www.mtlimited.com



**BUREAU  
 VERITAS**

**ISO 9001:2000 Standards**