

WEBTRAX

MTL - VTWA

**FEATURES**

WebTrax provides three types of logins:

- **Administrator:** This is the main control centre of WebTrax, from where the VTS network can be managed. It has the following management features:
 - o Create new distributor
 - o Create new vehicle
 - o Delete vehicle
 - o Edit/ update distributor
 - o Edit/ update vehicle
- **Distributor:** This is the second level login, from where the vehicles of a particular fleet can be controlled and monitored:
 - o Create user
 - o Edit/Update user
 - o Remote control of vehicle
- **User:** This is the third level login, from where users can locate their vehicles and generate various useful level reports

WebTrax can help generate the following reports:

- **Trip Report**
 - o Distance traveled
 - o Driven Time
 - o Usage time
 - o Idle time
 - o Total trip time

WebTrax is a comprehensive, informative and user friendly web based application, which facilitates in managing the VTS network. It provides complete vehicle management functions ranging from tracking and controlling to event logging and report generation. Its detailed reports can provide important information on complete trips and driver behavior, and thus can help effectively manage a fleet in a cost effective manner. WebTrax's functionality can be used by the administrator, the distributor and the end client.

- Driver behaviour report
 - o Over/under speed
 - o Harsh break
 - o Harsh acceleration
 - o Usage time
 - o Idle time
 - o Trip time
 - o Distance traveled

- Vehicle Usage report
 - o Total distance traveled
 - o Total fuel consumption

- Exceptions report
 - o Zone Cross events
 - o Main battery report
 - o Back up battery report
 - o Panic Button report

- Fleet report
 - o No. of fleets used by the company
 - o Fleet usage time
 - o Fleet stopped time
 - o Fleet idle time

• All reports will provide a graphical representation of the data which will be of additional help when viewing the general performance of the vehicle.

Tracking on Integrated Satellite Images

Records the following events:

- Over Speed
- Under Speed
- Harsh Brake
- Harsh Acceleration
- Main Battery Failure

- Backup Battery Failure
- Zone Crossing
- GPS Lock / Unlock
- GPRS In / Out
- Analogue / Digital Input Change
- On Demand Output Change
- Time Based Events
- Distance Based Events

Records digital / analogue input readings

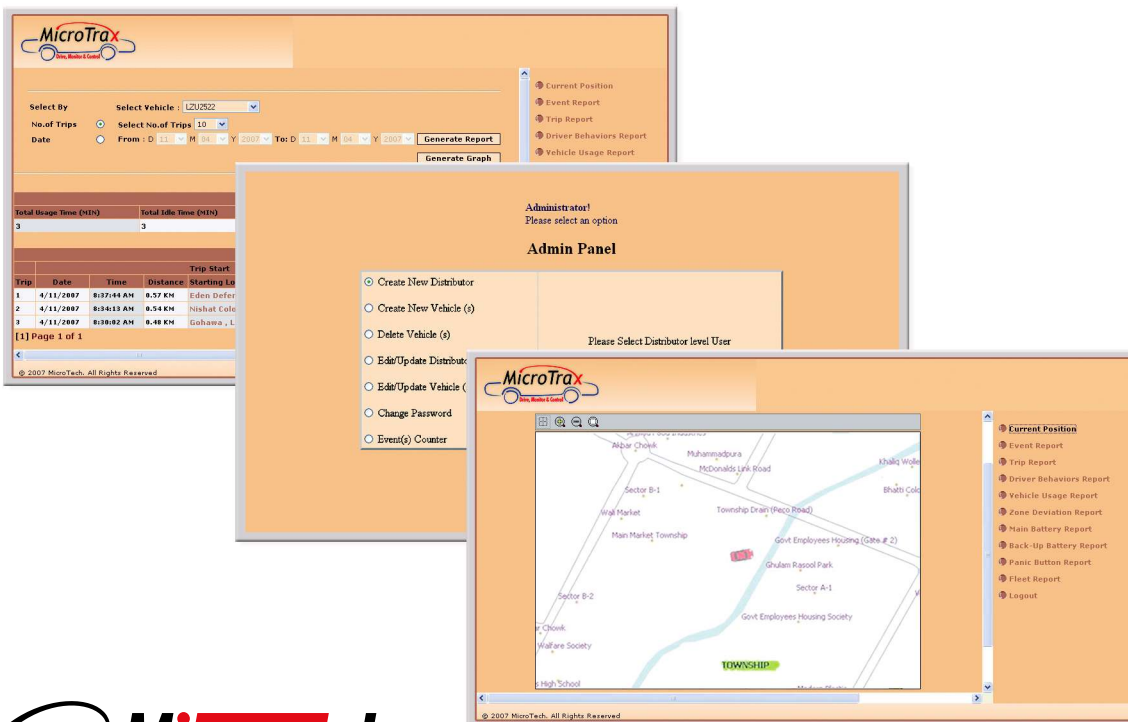
- 4 Analogue Inputs (e.g. fuel gauge reading, temperature reading)
 - External Transducers are required
- 4 Digital Inputs (e.g. door open/close, ignition on/off, panic button on/off)

Software Requirements:

- Windows server 2000 or higher (Server Operating System)
- Internet Information Server (IIS) 5.0 or higher
- .NET Framework 2.0 or higher
- SQL server client
- Detailed map of Pakistan (Supported Format)
- Digital map software

Hardware Requirements:

- Processor-3.0 GHz or higher
- Intel server board
- RAM 1 GB DDR
- Hard disk - 60 GB
- server casing Intel (recommended)
- Network Interface card - 10/100
- CD writer (Optional)
- Keyboard
- Mouse
- Monitor (1024 x 768, 85 Hz minimum)



Attari Industrial Estate, Plot # 2, Street # 2
 18 KM. Ferozepur Road, Lahore- Pakistan
 PABX : +92-42-35990015
 Tel: +92-42-35924781-4
 Fax: +92-42-35924780
 E-mail: marketing@mtlimited.com URL: www.mtilimited.com



ISO 9001:2000 Standards